

intercable TOOLS



SF PRODUCT LINE

www.intercable-tools.com

QUALITY MADE IN ITALY AND GERMANY





COMPANY

Intercable Tools is one of the most significant producers of special tools as well as connection material for various sectors. Founded in 1972 as a trade company, the family business continued to develop and began producing insulated tools in 1986. Today, in addition to the headquarter in South Tyrol/Italy, we have branches in Germany, Austria, Central Eastern Europe and the Netherlands.

The Intercable Tools special tools are suitable for live working and are primarily used for processing low, medium and high voltage cables. Our portfolio of tools consists of six different product groups:

- Hand tools
- Stripping tools
- Cutting tools
- Crimping tools
- Punching tools
- Hydraulic pumps

Additionally, Intercable Tools has an extensive range of connection materials such as tubular cable lugs and other connectors.

We place great importance to a high level of vertical integration and produce our products in our own facilities in Italy and Germany. Thus, we

have full control over every single step and can guarantee the highest quality and reliability.

Quality at Intercable is more than a promise, it is a principle that we live by every day. Here, we work according to the “zero-error principle” – with this strategic orientation, we avoid generating rejects or having to rework bad parts. This is the only way we can meet our own requirements and those of our customers. It is a continuous process and requires the full commitment of our highly qualified staff.

We want to be an attractive and competitive family company, which focuses on innovation and customer satisfaction. It is our mission to remain independent, sustainable and humble and we want to keep orienting and aligning ourselves with our employees, suppliers and customers. We are committed to making our customers’ work safer, easier and more professional.

The safety aspect is the main priority in our industry. State-of-the-art in-house production facilities ensure that the products that leave our plants, are compliant with the applicable safety standards and guidelines, thus guaranteeing safety for the user.



DIN EN ISO 9001: Reg.-Nr. 067378
ISO/TS 16949: Reg.-Nr. 067378

QUALITY

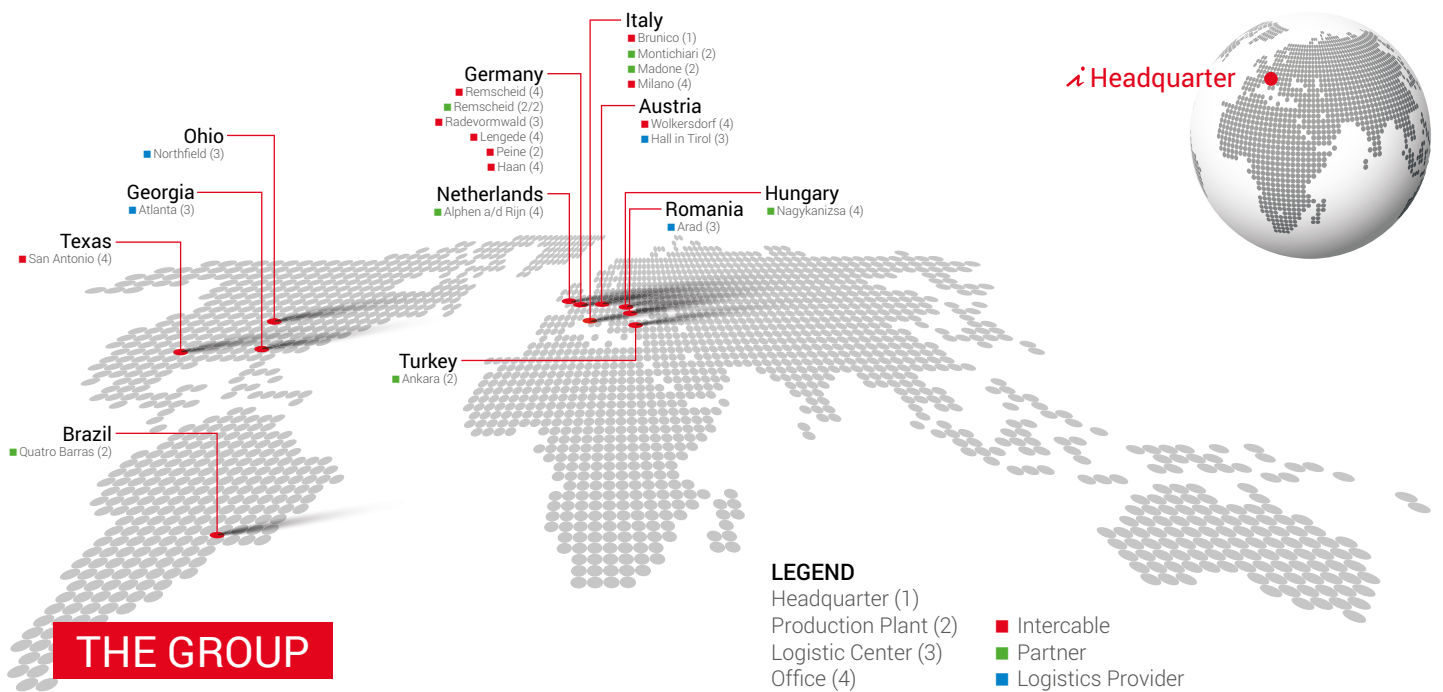


INTERCABLE STANDS FOR HIGHEST QUALITY

Quality is lived by our employees, our business partners and our suppliers every day. Our products are developed by us and produced in our facilities in Italy and Germany – this distinguishes us and guarantees the highest level of quality. In addition, all our processes are continuously optimized so that we meet our own requirements and those of our customers. In doing so, we rely on efficient organization and quality management in accordance with various standards.

TECHNOLOGY IS OUR PASSION

Ever since our founding in the 1970s our goal has been to provide workers from different industries with only the best tools and equipment. To ensure this, we have our own development department with highly experienced personnel which produces the most innovative technologies for our customers.



Intercable Tools, together with Intercable Automotive, developer and producer of technical plastic parts for the automotive industry, form the Intercable Group. As a modern company group, we strive for an optimal usage of synergies within the group. Intercable is represented globally with many different subsidiaries.



Different certificates confirm the quality of our work. We hold the following quality certificates:

- ISO 9001 (Quality management system)
- ISO 14001 (Environmental management system)
- ISO 45001 (Occupational health and safety management system)

as well as the VDE / IMQ / DGUV-Test / UL / CE / GS – certification.

Additionally, we are proud members of the CEI (Italian Committee for Electrical Engineering), the UNI (Italian Committee for Standardization) and various working groups of the European and International Standards Committee.

Our electrically insulated tools are isolated according to EN60900, which was prescribed by the European Committee for Standardization in 1993

and is mandatory in all countries of the European Union since 1999. The norm prescribes a series of technical tests that must be performed on all insulated tools. Every single insulated tool that leaves our production facilities is tested for 1000V and 100% suitable for live working.

Insulated hand tools are made fully or partially of conductive material and are covered with insulating material. This protects the user from a possible electric shock.

Insulating hand tools are made entirely or essentially of insulating material, except for inserts made of conductive material (for the purpose of reinforcement), but without exposed conductive parts. This protects the user from a possible electric shock and prevents a short circuit between two parts with different electrical potential.

THE CONNECTING MATERIAL ACCORDING TO HIGHEST STANDARDS.

Cable lugs and connectors of the highest quality standards.

The copper tube cable lugs by **Intercable** are manufactured according to SN 71322 and are extremely resistant to vibrations due to a special manufacturing process.

All the following cable lugs and connectors of standards SN 71322 are galvanically high-gloss tin-plated and suitable for flexible copper cables of class 5 and 6 (e.g., SIAF, SIWOKUL and SILICUL). **Intercable** only uses EN13600 compliant pipe material as specified. All items listed here have internal and external phases. This so-called insertion funnel (easy entry) facilitates the insertion of the cable into the cable lug and connector.

Inspection hole
With inspection hole to control the perfect connection.

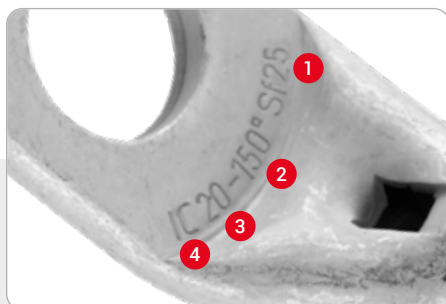
Cost-Efficient
Lighter and shorter compared to DIN lugs without compromising on capabilities

Owned production in Germany
Made in an Intercable owned factory in Germany. Even the tinning processes are made there.

Variety range of use
For copper cable class 5 and 6. Best performance with i-crimping

Highest quality materials
Cu-HCP 99,9% clean and tinned electrolytic copper - the base for a long-term crimped connection of the highest quality.

Certified
UL-approved



- 1 Tube outer diameter
- 2 Square millimeter
- 3 Fixing hole size
- 4 Manufacturer



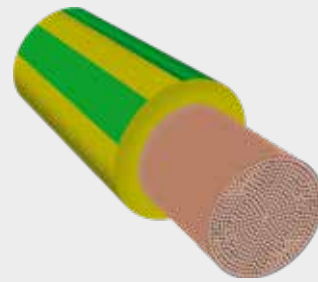
- 5 Entry funnel
- 6 External phase (for installation of shrink tubing)



view the full UL certified document



fine-stranded
conductors



fine-stranded
compressed
conductors




Conventional
tubular cable lugs
and **connectors**



i - Crimp



intelligent
crimping

| Crimping | Innovative i -Crimping |
|----------------|--|
| |  |
| Annotation | <ul style="list-style-type: none"> - Suitable for fine-stranded cable types - Fine-stranded conductors - Fine-stranded compressed conductors (Class 5/6) |
| Extract values | Far above the limit of the standard requirement |
| Benefits | <ul style="list-style-type: none"> - Better power transmission range - Less power resistance - Better contact between conductor and cable lug - Better pull-out values compressed conductors |

TUBULAR CABLE LUGS

08 - 10



CRIMPING TOOLS - SERIES 60-2/4 - 60 KN

11 - 13



CRIMPING TOOLS - SERIES 130-C - 130 KN

14 - 15



ACCESSORIES FOR CRIMPING TOOLS

16



CRIMPING DIES

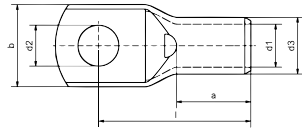
17



CRIMPING INSTRUCTIONS

18

TUBULAR CABLE LUGS



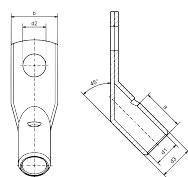
For flexible conductors
Material CU according to DIN EN 13600
Surface: tin-plated
With inspection hole
SN71322
UL: E472958



| Cross section mm ² | Flat hole M | Order No. | Dimensions in mm | | | | | | Weight 100 Pcs/kg | Packing unit Pcs. | Tool | Tool |
|----------------------------------|----------------|-------------|------------------|------|------|------|----|------|----------------------|----------------------|--|---|
| | | | d1 | d3 | d2 | b | l | a | | | | |
| 10 Sf | 5 | ICSF105SL | 5,0 | 8,0 | 5,3 | 11,5 | 23 | 10 | 0,77 | 100 | MP60-2, PP60-2, HP60-4, AP60-2, PP130-C, HP1130-C, AP130-C | PP130-C2, PP130-H, HP1130-C2, HP1130-H, AP130-C2, AP130-H |
| | 6 | ICSF106SL | | | 6,4 | 11,5 | 23 | | 0,73 | 100 | | |
| | 8 | ICSF108SL | | | 8,4 | 13,5 | 26 | | 0,78 | 100 | | |
| | 10 | ICSF1010SL | | | 10,5 | 16 | 26 | | 0,79 | 100 | | |
| | 12 | ICSF1012SL | | | 13 | 19 | 31 | | 0,97 | 100 | | |
| 16 Sf | 5 | ICSF165SL | 6,0 | 9,0 | 5,3 | 13 | 26 | 11 | 1,02 | 100 | | |
| | 6 | ICSF166SL | | | 6,4 | 13 | 26 | | 1,01 | 100 | | |
| | 8 | ICSF168SL | | | 8,4 | 13 | 26 | | 0,93 | 100 | | |
| | 10 | ICSF1610SL | | | 10,5 | 16 | 28 | | 1,01 | 100 | | |
| | 12 | ICSF1612SL | | | 13 | 22 | 35 | | 1,26 | 100 | | |
| 25 Sf | 5 | ICSF255SL | 8,0 | 11,0 | 5,3 | 16 | 31 | 14,5 | 1,53 | 100 | | |
| | 6 | ICSF256SL | | | 6,4 | 16 | 31 | | 1,51 | 100 | | |
| | 8 | ICSF258SL | | | 8,4 | 16 | 31 | | 1,44 | 100 | | |
| | 10 | ICSF2510SL | | | 10,5 | 17 | 32 | | 1,52 | 100 | | |
| | 12 | ICSF2512SL | | | 13 | 22 | 35 | | 1,68 | 100 | | |
| 35 Sf | 6 | ICSF356SL | 9,0 | 13,0 | 6,4 | 18 | 37 | 18 | 2,85 | 100 | | |
| | 8 | ICSF358SL | | | 8,4 | 18 | 37 | | 2,76 | 100 | | |
| | 10 | ICSF3510SL | | | 10,5 | 18 | 37 | | 2,64 | 100 | | |
| | 12 | ICSF3512SL | | | 13 | 22 | 40 | | 3,11 | 100 | | |
| 50 Sf | 6 | ICSF506SL | 11,0 | 14,5 | 6,4 | 21 | 39 | 19 | 3,11 | 100 | | |
| | 8 | ICSF508SL | | | 8,4 | 21 | 39 | | 2,99 | 100 | | |
| | 10 | ICSF5010SL | | | 10,5 | 21 | 39 | | 2,91 | 100 | | |
| | 12 | ICSF5012SL | | | 13 | 21 | 41 | | 2,93 | 100 | | |
| | 16 | ICSF5016SL | | | 17 | 27 | 44 | | 3,28 | 100 | | |
| 70 Sf | 6 | ICSF706SL | 13,0 | 17,0 | 6,4 | 25 | 44 | 21 | 4,71 | 50 | | |
| | 8 | ICSF708SL | | | 8,4 | 25 | 44 | | 4,57 | 50 | | |
| | 10 | ICSF7010SL | | | 10,5 | 25 | 44 | | 4,47 | 50 | | |
| | 12 | ICSF7012SL | | | 13 | 25 | 46 | | 4,54 | 50 | | |
| | 16 | ICSF7016SL | | | 17 | 28 | 49 | | 4,71 | 50 | | |
| 95 Sf | 8 | ICSF958SL | 15,0 | 20,0 | 8,4 | 29 | 54 | 25 | 8,75 | 50 | | |
| | 10 | ICSF9510SL | | | 10,5 | 29 | 54 | | 8,47 | 50 | | |
| | 12 | ICSF9512SL | | | 13 | 29 | 54 | | 8,23 | 50 | | |
| | 16 | ICSF9516SL | | | 17 | 29 | 54 | | 7,74 | 50 | | |
| 120 Sf | 10 | ICSF12010SL | 17,0 | 22,0 | 10,5 | 32 | 58 | 27 | 10,12 | 50 | | |
| | 12 | ICSF12012SL | | | 13 | 32 | 58 | | 9,86 | 50 | | |
| | 16 | ICSF12016SL | | | 17 | 32 | 58 | | 9,34 | 50 | | |
| 150 Sf | 10 | ICSF15010SL | 19,0 | 25,0 | 10,5 | 36 | 65 | 31 | 15,16 | 25 | | |
| | 12 | ICSF15012SL | | | 13 | 36 | 65 | | 14,78 | 25 | | |
| | 16 | ICSF15016SL | | | 17 | 36 | 65 | | 14,19 | 25 | | |
| | 20 | ICSF15020SL | | | 21 | 36 | 68 | | 14,89 | 25 | | |
| 185 Sf | 10 | ICSF18510SL | 21,0 | 27,0 | 10,5 | 39 | 71 | 35 | 18,19 | 25 | | |
| | 12 | ICSF18512SL | | | 13 | 39 | 71 | | 17,79 | 25 | | |
| | 16 | ICSF18516SL | | | 17 | 39 | 71 | | 17,18 | 25 | | |
| | 20 | ICSF18520SL | | | 21 | 39 | 74 | | 18 | 25 | | |
| 240 Sf | 10 | ICSF24010SL | 22,5 | 29,0 | 10,5 | 42 | 77 | 36 | 23,6 | 20 | | |
| | 12 | ICSF24012SL | | | 13 | 42 | 77 | | 23,2 | 20 | | |
| | 16 | ICSF24016SL | | | 17 | 42 | 77 | | 22,44 | 20 | | |
| | 20 | ICSF24020SL | | | 21 | 42 | 77 | | 21,48 | 20 | | |
| 300 Sf | 10 | ICSF30010SL | 24,5 | 32,0 | 10,5 | 45 | 94 | 40 | 34,93 | 20 | | |
| | 12 | ICSF30012SL | | | 13 | 45 | 94 | | 34,64 | 20 | | |
| | 16 | ICSF30016SL | | | 17 | 45 | 94 | | 34,03 | 20 | | |
| | 20 | ICSF30020SL | | | 21 | 45 | 94 | | 33,26 | 20 | | |

TUBULAR CABLE LUGS WITH 45° ANGLE

TUBULAR CABLE LUGS WITH 45° angle



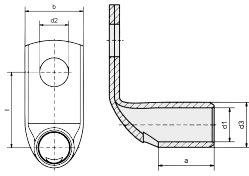
For flexible conductors
Material: CU according to DIN EN 13600
Surface: tin-plated
With inspection hole
SN71322
UL: E472958



| Cross section mm ² | Flat hole M | Order No. | Dimensions in mm | | | | | Weight 100 Pcs/kg | Packing unit Pcs. | Tool | Tool |
|----------------------------------|----------------|---------------|------------------|------|------|------|------|----------------------|----------------------|--------------------------------|--|
| | | | d1 | d3 | d2 | b | a | | | | |
| 10 Sf | 5 | ICSF10545SL | 5 | 8 | 5,3 | 13 | 9 | 1,05 | 100 | MP60-2, PP60-2, HP60-4, AP60-2 | PP130-C, PP130-C2, PP130-H, HP130-C, HP130-C2, HP130-H, AP130-C, AP130-C2, AP130-H |
| | 6 | ICSF10645SL | | | 6,4 | 13 | | 1,09 | 100 | | |
| | 8 | ICSF10845SL | | | 8,4 | 13,5 | | 0,99 | 100 | | |
| | 10 | ICSF101045SL | | | 10,5 | 16 | | 1,09 | 100 | | |
| 16 Sf | 5 | ICSF16545SL | 6 | 9 | 5,3 | 13 | 10 | 1,21 | 100 | | |
| | 6 | ICSF16645SL | | | 6,4 | 13 | | 1,27 | 100 | | |
| | 8 | ICSF16845SL | | | 8,4 | 13,5 | | 1,34 | 100 | | |
| | 10 | ICSF161045SL | | | 10,5 | 16 | | 1,35 | 100 | | |
| | 12 | ICSF161245SL | | | 13 | 19 | | 1,55 | 100 | | |
| 25 Sf | 6 | ICSF25645SL | 8 | 11 | 6,4 | 17 | 13,5 | 1,7 | 100 | | |
| | 8 | ICSF25845SL | | | 8,4 | 17 | | 1,77 | 100 | | |
| | 10 | ICSF251045SL | | | 10,5 | 17 | | 1,81 | 100 | | |
| | 12 | ICSF251245SL | | | 13 | 19 | | 2 | 100 | | |
| 35 Sf | 6 | ICSF35645SL | 9 | 13 | 6,4 | 18 | 17 | 2,97 | 100 | | |
| | 8 | ICSF35845SL | | | 8,4 | 18 | | 3,08 | 100 | | |
| | 10 | ICSF351045SL | | | 10,5 | 18 | | 3,2 | 100 | | |
| | 12 | ICSF351245SL | | | 13 | 19 | | 2,8 | 100 | | |
| 50 Sf | 6 | ICSF50645SL | 11 | 14,5 | 6,4 | 21 | 18 | 3,22 | 100 | | |
| | 8 | ICSF50845SL | | | 8,4 | 21 | | 3,5 | 100 | | |
| | 10 | ICSF501045SL | | | 10,5 | 21 | | 3,59 | 100 | | |
| | 12 | ICSF501245SL | | | 13 | 21 | | 3,57 | 100 | | |
| | 16 | ICSF501645SL | | | 17 | 27 | | 3,75 | 100 | | |
| 70 Sf | 6 | ICSF70645SL | 13 | 17 | 6,4 | 25 | 20 | 4,97 | 50 | | |
| | 8 | ICSF70845SL | | | 8,4 | 25 | | 5,13 | 50 | | |
| | 10 | ICSF701045SL | | | 10,5 | 25 | | 5,28 | 50 | | |
| | 12 | ICSF701245SL | | | 13 | 25 | | 5,27 | 50 | | |
| | 16 | ICSF701645SL | | | 17 | 28 | | 5,18 | 50 | | |
| 95 Sf | 8 | ICSF95845SL | 15 | 20 | 8,4 | 29 | 24 | 8,16 | 50 | | |
| | 10 | ICSF951045SL | | | 10,5 | 29 | | 8,41 | 50 | | |
| | 12 | ICSF951245SL | | | 13 | 29 | | 8,5 | 50 | | |
| | 16 | ICSF951645SL | | | 17 | 29 | | 8,57 | 50 | | |
| 120 Sf | 8 | ICSF120845SL | 17 | 22 | 8,4 | 32 | 26 | 9,47 | 50 | | |
| | 10 | ICSF1201045SL | | | 10,5 | 32 | | 9,77 | 50 | | |
| | 12 | ICSF1201245SL | | | 13 | 32 | | 9,9 | 50 | | |
| | 16 | ICSF1201645SL | | | 17 | 32 | | 10,03 | 50 | | |
| 150 Sf | 10 | ICSF1501045SL | 19 | 25 | 10,5 | 36 | 30 | 14,55 | 25 | | |
| | 12 | ICSF1501245SL | | | 13 | 36 | | 14,65 | 25 | | |
| | 16 | ICSF1501645SL | | | 17 | 36 | | 14,88 | 25 | | |
| 185 Sf | 10 | ICSF1851045SL | 21 | 27 | 10,5 | 39 | 34 | 17,05 | 25 | | |
| | 12 | ICSF1851245SL | | | 13 | 39 | | 17,17 | 25 | | |
| | 16 | ICSF1851645SL | | | 17 | 39 | | 17,45 | 25 | | |
| 240 Sf | 10 | ICSF2401045SL | 22,5 | 29 | 10,5 | 42 | 35 | 20,35 | 20 | | |
| | 12 | ICSF2401245SL | | | 13 | 42 | | 20,95 | 20 | | |
| | 16 | ICSF2401645SL | | | 17 | 42 | | 20,87 | 20 | | |

TUBULAR CABLE LUGS WITH 90° ANGLE

TUBULAR CABLE LUGS WITH 90° angle



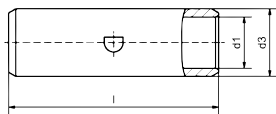
For flexible conductors
Material: Cu according to DIN EN 13600
Surface: tin-plated
With inspection hole
SN71322
UL: E472958



| Cross section mm ² | Flat hole M | Order No. | Dimensions in mm | | | | | | Weight 100 Pcs/kg | Packing unit Pcs. | Tool | Tool |
|----------------------------------|----------------|---------------|------------------|------|------|------|------|------|----------------------|----------------------|--|---|
| | | | d1 | d3 | d2 | b | l | a | | | | |
| 10 Sf | 5 | ICSF10590SL | 5 | 8 | 5,3 | 13 | 16 | 9 | 0,99 | 100 | MP60-2, PP60-2, HP60-4, AP60-2, PP130-C, HP1130-C, AP130-C | PP130-C2, PP130-H, HP1130-C2, HP1130-H, AP130-C2, AP130-H |
| | 6 | ICSF10690SL | | | 6,4 | 13 | 16,5 | | 1,03 | 100 | | |
| | 8 | ICSF10890SL | | | 8,4 | 13,5 | 17 | | 0,93 | 100 | | |
| | 10 | ICSF101090SL | | | 10,5 | 16 | 18,5 | | 1,04 | 100 | | |
| 16 Sf | 5 | ICSF16590SL | 6 | 9 | 5,3 | 13 | 16,5 | 10 | 1,08 | 100 | | |
| | 6 | ICSF16690SL | | | 6,4 | 13 | 17 | | 1,14 | 100 | | |
| | 8 | ICSF16890SL | | | 8,4 | 13 | 17,5 | | 1,21 | 100 | | |
| | 10 | ICSF161090SL | | | 10,5 | 16 | 19 | | 1,23 | 100 | | |
| | 12 | ICSF161290SL | | | 13 | 19 | 24 | | 1,44 | 100 | | |
| 25 Sf | 6 | ICSF25690SL | 8 | 11 | 6,4 | 17 | 18,5 | 13,5 | 1,61 | 100 | | |
| | 8 | ICSF25890SL | | | 8,4 | 17 | 19 | | 1,68 | 100 | | |
| | 10 | ICSF251090SL | | | 10,5 | 17 | 20,5 | | 1,72 | 100 | | |
| | 12 | ICSF251290SL | | | 13 | 19 | 25,5 | | 1,92 | 100 | | |
| 35 Sf | 6 | ICSF35690SL | 9 | 13 | 6,4 | 18 | 19,5 | 17 | 2,7 | 100 | | |
| | 8 | ICSF35890SL | | | 8,4 | 18 | 20 | | 2,81 | 100 | | |
| | 10 | ICSF351090SL | | | 10,5 | 18 | 21,5 | | 2,92 | 100 | | |
| | 12 | ICSF351290SL | | | 13 | 19 | 26,5 | | 3,11 | 100 | | |
| 50 Sf | 6 | ICSF50690SL | 11 | 14,5 | 6,4 | 21 | 23,3 | 18 | 3,42 | 100 | | |
| | 8 | ICSF50890SL | | | 8,4 | 21 | 26,3 | | 3,69 | 100 | | |
| | 10 | ICSF501090SL | | | 10,5 | 21 | 27,3 | | 3,79 | 100 | | |
| | 12 | ICSF501290SL | | | 13 | 21 | 28,3 | | 3,77 | 100 | | |
| | 16 | ICSF501690SL | | | 17 | 27 | 29,3 | | 4,02 | 100 | | |
| 70 Sf | 6 | ICSF70690SL | 13 | 17 | 6,4 | 25 | 27,5 | 20 | 5,07 | 50 | | |
| | 8 | ICSF70890SL | | | 8,4 | 25 | 27,5 | | 5,23 | 50 | | |
| | 10 | ICSF701090SL | | | 10,5 | 25 | 28,5 | | 5,38 | 50 | | |
| | 12 | ICSF701290SL | | | 13 | 25 | 29,5 | | 5,38 | 50 | | |
| | 16 | ICSF701690SL | | | 17 | 28 | 30,5 | | 5,25 | 50 | | |
| 95 Sf | 8 | ICSF95890SL | 15 | 20 | 8,4 | 29 | 29 | 24 | 7,77 | 50 | | |
| | 10 | ICSF951090SL | | | 10,5 | 29 | 30 | | 8,02 | 50 | | |
| | 12 | ICSF951290SL | | | 13 | 29 | 31 | | 8,11 | 50 | | |
| | 16 | ICSF951690SL | | | 17 | 29 | 32 | | 8,18 | 50 | | |
| 120 Sf | 8 | ICSF120890SL | 17 | 22 | 8,4 | 32 | 30,5 | 26 | 9,05 | 50 | | |
| | 10 | ICSF1201090SL | | | 10,5 | 32 | 31,5 | | 9,35 | 50 | | |
| | 12 | ICSF1201290SL | | | 13 | 32 | 32,5 | | 9,47 | 50 | | |
| | 16 | ICSF1201690SL | | | 17 | 32 | 33,5 | | 9,6 | 50 | | |
| 150 Sf | 10 | ICSF1501090SL | 19 | 25 | 10,5 | 36 | 33 | 30 | 13,76 | 25 | | |
| | 12 | ICSF1501290SL | | | 13 | 36 | 34 | | 13,86 | 25 | | |
| | 16 | ICSF1501690SL | | | 17 | 36 | 35 | | 14,09 | 25 | | |
| 185 Sf | 10 | ICSF1851090SL | 21 | 27 | 10,5 | 39 | 34 | 34 | 15,82 | 25 | | |
| | 12 | ICSF1851290SL | | | 13 | 39 | 35 | | 15,94 | 25 | | |
| | 16 | ICSF1851690SL | | | 17 | 39 | 36 | | 16,23 | 25 | | |
| 240 Sf | 10 | ICSF2401090SL | 22,5 | 29 | 10,5 | 42 | 35 | 35 | 18,93 | 20 | | |
| | 12 | ICSF2401290SL | | | 13 | 42 | 36 | | 19,08 | 20 | | |
| | 16 | ICSF2401690SL | | | 17 | 42 | 37 | | 19,46 | 20 | | |

TUBULAR BUTT-CONNECTORS

TUBULAR BUTT-CONNECTORS



For flexible conductors
Material: CU according to EN 13600
Surface: tin-plated
With wirestop
SN71322
UL: E472958



| Cross section mm ² | Order No. | Dimensions in mm | | | Weight 100 Pcs/kg | Packing unit Pcs. | Tool | Tool |
|----------------------------------|------------|------------------|------|----|----------------------|----------------------|--|---|
| | | d1 | d3 | l | | | | |
| 10 Sf | ICSF10VSL | 5 | 8 | 30 | 0,79 | 100 | PP130-C, HP130-C, AP130-C, MP60-2, PP60-2, HP60-4, AP60-2 | PP130-C, PP130-C2, PP130-H, HP130-C, HP130-H, AP130-C, AP130-C2, AP130-H |
| 16 Sf | ICSF16VSL | 6 | 9 | 35 | 1,07 | 100 | | |
| 25 Sf | ICSF25VSL | 8 | 11 | 35 | 1,36 | 100 | | |
| 35 Sf | ICSF35VSL | 9 | 13 | 35 | 2,17 | 100 | | |
| 50 Sf | ICSF50VSL | 11 | 14,5 | 45 | 2,75 | 100 | | |
| 70 Sf | ICSF70VSL | 13 | 17 | 45 | 3,68 | 50 | | |
| 95 Sf | ICSF95VSL | 15 | 20 | 45 | 5,33 | 50 | | |
| 120 Sf | ICSF120VSL | 17 | 22 | 55 | 7,31 | 50 | | |
| 150 Sf | ICSF150VSL | 19 | 25 | 65 | 12,02 | 25 | | |
| 185 Sf | ICSF185VSL | 21 | 27 | 70 | 13,76 | 25 | | |
| 240 Sf | ICSF240VSL | 22,5 | 29 | 70 | 16,98 | 10 | | |
| 300 Sf | ICSF300VSL | 24,5 | 32 | 75 | 21,63 | 10 | | |

MAIN CHARACTERISTICS MP60-2 - PP60-2 - HP60-4 - STILO-60 - AP60-2

| | |
|------------------|--------------------------|
| CRIMPING SECTION | max. 300 mm ² |
| MAXIMUM STROKE | 17 mm |

| | |
|--------------------|------------------|
| CRIMPING FORCE | 60 kN |
| OPERATING PRESSURE | 700 bar (70 MPa) |



MP60-2 - Mechanical crimping tool - 60 kN

| | |
|------------------|-------------------------|
| CRIMPING SECTION | max 300 mm ² |
| MAXIMUM STROKE | 19 mm |
| CRIMPING FORCE | 60 kN |

Technical characteristics:

- Light and compact structure
- Telescopic handles adjustable from 560 to 860 mm
- Snap closure crimping head, rotates 360°

Tool dimensions: 154 x 552 x 44 mm
Tool weight: 3,6 kg

| Description | Order No. | Dimensions | Weight |
|-------------------|-----------|--------------------|--------|
| Set crimping tool | MP60-2 | 700 x 260 x 105 mm | 5,3 kg |

Set equipment:

- Mechanical crimping tool
- Nylon case



PP60-2 - Hydraulic crimping head

The unit must be operated through 700 bar hydraulic pump to reach crimping force of 60 kN.

Technical characteristics:

- Sturdy and compact structure
- Openable head to make it easy to position and insert the crimping dies
- Quick make snap lock connection and non detachable dust cap

Tool dimensions: 93 x 198 x 93 mm
Tool weight: 1,7 kg

| Description | Order No. | Dimensions | Weight |
|-------------------|-----------|-------------------|--------|
| Set crimping head | PP60-2 | 320 x 260 x 75 mm | 2,3 kg |

Set equipment:

- Hydraulic crimping head
- Plastic case for crimping head and maximum 18 crimping dies



Set HP60-4

HP60-4 - Hand operated hydraulic crimping tool

Technical characteristics:

- Sturdy and compact structure
- Snap closure crimping head, rotates 180°
- Quick feed with double hydraulic cylinder
- Automatic pressure safety valve
- Manual return at any position by turning the main handle

Tool dimensions 176 x 396 x 54 mm
Tool weight: 2,8 kg

| Description | Order No. | Dimensions | Weight |
|-------------------|-----------|--------------------|--------|
| Set crimping tool | HP60-4 | 700 x 260 x 105 mm | 4,6 kg |

Set equipment:

- Test report
- Manual crimping tool
- Plastic case for crimping tool and 21 crimping dies



Set STILO60



STILO60 - Battery operated hydraulic crimping tool

Technical characteristics:

- Lightweight, compact and robust frame
- Rapid advance three-piston axial pump
- Emergency manual return
- Multi-function electronic system with sleep mode, maintenance and battery check indicators
- Ergonomic design provides easy operation for both left- and right-handed users
- LED display indicates battery level and malfunction
- All cycles and error messages read via USB
- Voltage: 18V DC - 1,5Ah, Charge time approximately 30 min.
- Battery state control is readable directly on the battery by led lights
- Operating temperature range: -10°C / +40°

Tool dimensions: 124 x 383 x 81 mm
Tool weight: 3,3 kg (incl. battery)

| Description | Order No. | Dimensions | Weight |
|-------------------|-----------|--------------------|--------|
| Set crimping tool | STILO60 | 560 x 357 x 118 mm | 6,3 kg |

Accessories see page 16

Set equipment:

- Test report
- Battery-operated hydraulic crimping tool
- Battery 18 V/1,5 Ah Li-Ion (RA20)
- Battery charger (LG8)
- USB-cable
- Software (CD)
- Rigid plastic case



Set AP60-2



AP60-2 - Battery operated hydraulic crimping tool

Technical characteristics:

- 3 years of warranty or 20.000 work cycles
- Light and compact structure
- Crimping head with snap closure, rotates 360°
- High speed feed with double hydraulic cylinder
- Pressure release button with single handed operation (on both sides, for left- and right handed operators)
- Fastening ring for shoulder strap
- Ergonomic grip for weight balance to ensure an easy and safe operation
- Plastic housing, grip and pressure release button, insulating and shock resistant
- Powerful LED for working space illumination

Tool dimensions: 331 x 334 x 75 mm

Tool weight: 4,4 kg

| Description | Order No. | Dimensions | Weight |
|-------------------|-----------|--------------------|--------|
| Set Crimping Tool | AP60-2 | 580 x 470 x 115 mm | 7,8 kg |

Accessories see page 16

Set equipment:

- Test report
- Battery-operated hydraulic crimping tool
- Battery 18 V/5,0 Ah Li-Ion (RA50)
- Battery charger (LG8)
- Rigid plastic case for crimping tool and maximum 18 crimping dies
- Shoulder strap (TG2)

CRIMPING TOOLS - SERIES 130-C - 130 KN

MAIN CHARACTERISTICS PP130-C2 - HPI130-C2 - AP130-C2

| | |
|------------------|--------------------------|
| CRIMPING SECTION | max. 400 mm ² |
| MAXIMUM STROKE | 30 mm |

| | |
|--------------------|------------------|
| CRIMPING FORCE | 130 kN |
| OPERATING PRESSURE | 700 bar (70 MPa) |



PP130-C2



HPI130-C2



AP130-C2

HEAD OPENING: 42 mm



Set PP130-C2



PP130-C2 - Hydraulic crimping head

The unit must be operated through 700 bar hydraulic pump to reach crimping force of 130 kN

Technical characteristics:

- Sturdy and compact structure
- C head for easy positioning of dies
- Quick make snap lock connection and non detachable dust cap

Tool dimensions: 129 x 271 x 78 mm

Tool weight: 4,4 kg

| Description | Order No. | Dimensions | Weight |
|-------------------|-----------|--------------------|--------|
| Set crimping head | PP130-C2 | 400 x 350 x 130 mm | 5,9 kg |

Set equipment:

- Hydraulic crimping head
- Plastic case for crimping head and 14 crimping dies



Set HPI130-C2

HPI130-C2 - Hand operated hydraulic crimping tool

Technical characteristics:

- Sturdy and compact structure
- C-shaped crimping head, rotates 270°
- Quick feed with double hydraulic cylinder
- Single hand use by innerside handle
- Automatic pressure safety valve
- Manual return at any position by turning the main handle

Tool dimensions: 225 x 577 x 78 mm

Tool weight: 6,5 kg

| Description | Order No. | Dimensions | Weight |
|-------------------|-----------|--------------------|--------|
| Set Crimping Tool | HPI130-C2 | 700 x 260 x 105 mm | 8,2 kg |

Set equipment:

- Test report
- Manual crimping tool
- Plastic case for crimping tool and 9 crimping dies

CRIMPING TOOLS - SERIES 130-C - 130 KN



Set AP130-C2



AP130-C2 - Battery operated hydraulic crimping Tool

Technical characteristics:

- 3 years of warranty or 20.000 work cycles
- Light and compact structure
- C-shaped crimping head, rotates 360°
- High speed feed with double hydraulic cylinder
- Pressure release button with single handed operation (on both sides, for left- and right handed operators)
- Fastening ring for shoulder strap
- Ergonomic grip for weight balance to ensure an easy and safe operation
- Plastic housing, grip and pressure release button, insulating and shock resistant
- Powerful LED for working space illumination

Tool dimensions: 331 x 417 x 79 mm

Tool weight: 8 kg

| Description | Order No. | Dimensions | Weight |
|-------------------|-----------|--------------------|--------|
| Set crimping tool | AP130-C2 | 580 x 470 x 115 mm | 11 kg |

Accessories see page 16

Set equipment:

- Test report
- Battery-operated hydraulic crimping tool
- Battery 18 V/5,0 Ah Li-Ion (RA50)
- Battery charger (LG8)
- Rigid plastic case for crimping tool and maximum 18 crimping dies
- Shoulder strap (TG2)

Also available with different heads

| | | | | | |
|--------------|--------------|----------|----------|---------------------|--|
| SERIES 130-C | PP130-C | HPI130-C | AP130-C | 400 mm ² | |
| | SERIES 130-H | PP130-H | HPI130-H | AP130-H | |

ACCESSORIES FOR CRIMPING TOOLS



TG2

Strap

| Description | Order No. | Weight |
|---|-----------|---------|
| Shoulder strap (for hydraulic battery operated tools) | TG2 | 0,09 kg |



RA20



RA50

Storage batteries

| Description | Order No. | Weight |
|--------------------------------------|-----------|---------|
| Storage battery 18 V / 2.0 Ah Li-Ion | RA20 | 0,68 kg |
| Storage battery 18 V / 5.0 Ah Li-Ion | RA50 | 0,68 kg |



LGZ3 - Car lighter adapter Version



LG8

Battery charger

| Description | Order No. | Weight |
|---|-----------|---------|
| Battery charger 18V | LG8 | 0,70 kg |
| Vehicle battery charger (12 V source) - 18V | LGZ3 | 0,58 kg |



MP60-2

PP60-2

HP60-4

STILO60

AP60-2

Crimping Dies - Series 60-2/4



| Cross section mm ² | Order No. | Cross section mm ² | Order No. | Cross section mm ² | Order No. |
|----------------------------------|-----------|----------------------------------|-----------|----------------------------------|-----------|
| 10 Sf | SF10-CK | 50 Sf | SF50-CK | 150 Sf | SF150-CK |
| 16 Sf | SF16-CK | 70 Sf | SF70-CK | 185 Sf | SF185-CK |
| 25 Sf | SF25-CK | 95 Sf | SF95-CK | 240 Sf | SF240-CK |
| 35 Sf | SF35-CK | 120 Sf | SF120-CK | | |



Crimping Dies - Series 130



| Cross section mm ² | Order No. | Cross section mm ² | Order No. | Cross section mm ² | Order No. |
|----------------------------------|-----------|----------------------------------|-----------|----------------------------------|-----------|
| 10 Sf | SF10-C | 50 Sf | SF50-C | 150 Sf | SF150-C |
| 16 Sf | SF16-C | 70 Sf | SF70-C | 185 Sf | SF185-C |
| 25 Sf | SF25-C | 95 Sf | SF95-C | 240 Sf | SF240-C |
| 35 Sf | SF35-C | 120 Sf | SF120-C | 300 Sf | SF300-C |

Available on request

Crimping Dies - Series 60-2/4



Series 50

MP60-2

PP60-2

HP60-4

STILO60

AP60-2

Crimping Dies - Series 50 - Series 60-1/3



Series 50

HP50

STILO50

Series 60-1/3

MP60-1

MP60-3

PP60-1

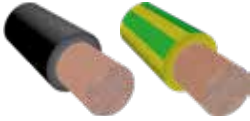
HP60-3

AP60-1

the dies shown here below are available on special request

CRIMPING INSTRUCTIONS

Cable Types



high flexible copper cables class 5 and 6

Cable Types

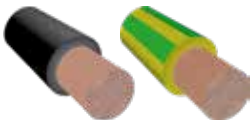


CRIMPING INSTRUCTIONS - SF-SERIES - 130 KN



| | PP130-C | PP130-C2 | PP130-H | HPI130-C | HPI130-C2 | HPI130-H | AP130-C | AP130-C2 | AP130-H | | | |
|----------------------------------|---------|----------|---------|----------|-----------|----------|---------|----------|---------|--------|--------|-----|
| Cross section in mm ² | 10 | 16 | 25 | 35 | 50 | 70 | 95 | 120 | 150 | 185 | 240 | 300 |
| Crimping width in mm | 7 | 7 | 10 | 10 | 12 | 12 | 7 | 7 | 5 (7)* | 5 (7)* | 5 (7)* | 7 |
| Number of Pressing | 1 | 1 | 1 | 1 | 1 | 1 | 2 | 2 | 3 (2) | 3 (2) | 3 (2) | 3 |

Cable Types



high flexible copper cables class 5 and 6

Cable Types



CRIMPING INSTRUCTIONS - SF-SERIES - 60-2/4 - 60 KN



| | MP60-2 | PP60-2 | HP60-4 | STILO60 | AP60-2 | | | | | | | |
|----------------------------------|--------|--------|--------|---------|--------|----|----|-----|-----|-----|-----|-----|
| Cross section in mm ² | 10 | 16 | 25 | 35 | 50 | 70 | 95 | 120 | 150 | 185 | 240 | 300 |
| Crimping width in mm | 5 | 5 | 5 | 5 | 5 | 5 | 5 | 5 | 5 | 5 | 5 | x |
| Number of pressing | 1 | 1 | 2 | 5 | 2 | 2 | 2 | 2 | 3 | 4 | 5 | x |

CHECK OUT THE FULL ASSORTMENT! WWW.INTERCABLE-TOOLS.COM



#welovetools





Already fan of
intercable?



intercable
TOOLS

Intercable Tools S.r.l.
Via dei Campi della Rienza, 21
IT-39031 Brunico - Italy
Tel. +39 0474 571 700
export@intercable.com
www.intercable-tools.com

Vers. 23.1

Intercable cannot be held liable for any damages or injuries resulting from improper use or operation of the products depicted in this catalogue. Furthermore, Intercable reserves the right to change the products in this catalogue without further notice.
Sales conditions: see www.intercable-tools.com